



www.Source1Parts.com

H*RC SERIES - 12 SEER - X3 SPLIT AIR CONDITIONER

HVAC SERVICE PARTS

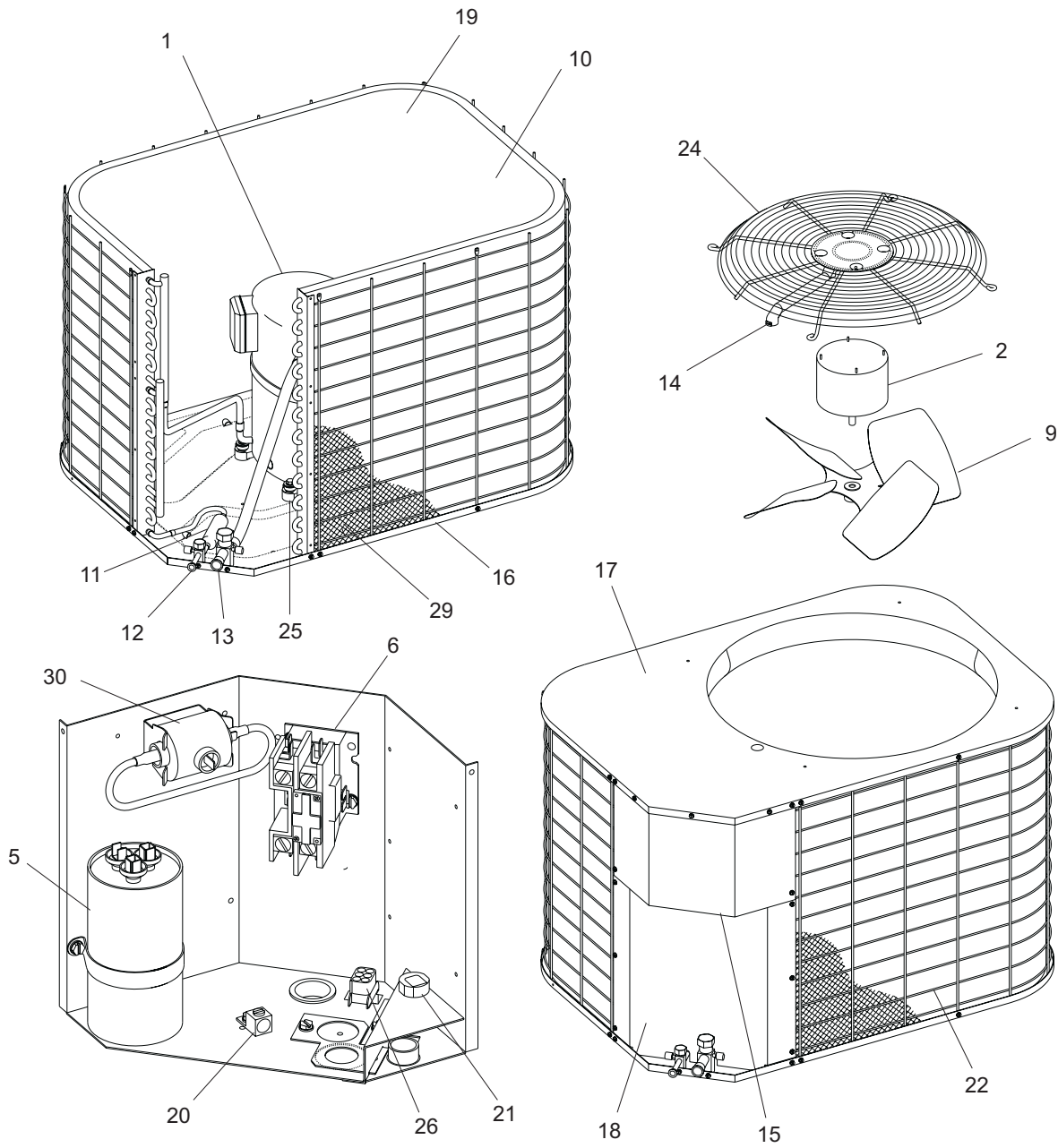
Supersedes:035-15827-001 Rev. B (1201)

035-15827-001 Rev. C (0902)

1 of 4

H2RC018S06A
H2RC024S06A
H2RC030S06A
H2RC036S06A

H2RC042S06A
H2RC048S06A
H2RC060S06A



Models 18, 24, 30, and 36

ITEM	DESCRIPTION	H2RC018S06A	H2RC024S06A	H2RC030S06A	H2RC036S06A
1	Compressor, Hermetic	015-03426-004	015-02748-004	015-03432-004	015-03424-001
1A*	Harness, Compressor	025-31883-000	025-31883-000	025-31884-000	025-31884-000
2	Motor, Fan	024-26067-010	024-26067-010	024-26029-000	024-27596-000
3					
4					
5	Capacitor, Dual (30/5 MFD) [RC] Capacitor, Dual (35/5 MFD) [RC] Capacitor, Dual (45/5 MFD) [RC]	024-24778-000 --- ---	024-24778-000 --- ---	--- 024-23998-000 ---	--- --- 024-25895-000
6	Contactors (30 amp)	024-27531-000	024-27531-000	024-27531-000	024-27531-000
7					
8					
9	Blade, Fan (18" Diameter) Blade, Fan (22" Diameter)	026-34091-000 ---	026-34091-000 ---	--- 026-34097-000	--- 026-34593-000
10	Coil, Condenser	373-19800-003	373-19800-003	373-19800-004	373-19800-004
11	Drier, Filter	029-22156-000	029-22156-000	029-22156-000	029-22156-000
12	Valve, Liquid (3/8")	025-31899-000	025-31899-000	025-31899-000	025-31899-000
13	Valve, Suction (3/4")	025-31900-000	025-31900-000	025-31900-000	025-31900-000
14	Wireway	028-13215-000	028-13215-000	028-13216-000	028-13216-000
15	Cover, Control Box	2218-1151/A	2218-1151/A	2218-1151/A	2218-1151/A
16	Pan, Base	2218-1011	2218-1011	2260-1011	2260-1011
17	Panel, Top	2218-1021/A	2218-1021/A	2260-1021/A	2260-1021/A
18	Plate, Blockoff	2242-1081/B	2242-1081/B	2248-1081/B	2248-1081/B
19	Panel, Corner	073-15606-113	073-15606-113	073-15606-114	073-15606-114
20	Lug, Ground	1216-229	1216-229	1216-229	1216-229
21	Relief, Strain	1216-235	1216-235	1216-235	1216-235
22	Guard, Coil (2 Req'd)	026-34538-000	026-34538-000	026-34539-000	026-34539-000
23					
24	Guard, Fan	026-35511-018	026-35511-018	026-35511-022	026-35511-022
25	Mount, Compressor (Pkg. of 4)	9435-1081	9435-1081	9435-1081	9435-1081
26	Plug, Electrical	025-33306-006	025-33306-006	025-33306-006	025-33306-006
27*	Diagram, Wiring	035-15861-501	035-15861-501	035-15861-501	035-15861-501
28	Blanket, Compressor	---	---	---	---
29	Guard, Wire Mesh Coil	028-14727-000	028-14727-000	028-14728-000	028-14728-000
30	Start Device, Solid State	---	---	---	---
31					
32*	Kit, Motor Mounting (Acorn Nuts)	363-90117-000	363-90117-000	363-90117-000	363-90117-000

<
<

NOTE: *Not Shown
 New replacement parts shown in **bold** face type at the first printing of parts list dated 9/02.
 Major components and suggested stocking items are shown with shaded item number.
 "<" Across from row indicates a change in that row.
 --- Not applicable to specified model.



Models 42, 48, and 60

ITEM	DESCRIPTION	H2RC042S06A	H2RC048S06A	H2RC060S06A
1	Compressor, Hermetic	015-03132-004	015-03297-004	015-02968-004
1A*	Harness, Compressor	025-31884-000	025-31884-000	---
2	Motor, Fan	024-27596-000	024-27596-000	024-27596-000
3				
4				
5	Capacitor, Dual (40/5 MFD) [RC] Capacitor, Dual (45/5 MFD) [RC] Capacitor, Dual (80/5 MFD) [RC]	024-25894-000 --- ---	--- 024-25895-000 ---	--- --- 024-26037-000
6	Contactors (30 amp) Contactors (40 amp)	024-27531-000 ---	024-27531-000 ---	--- 024-25837-000
7				
8				
9	Blade, Fan (22" Diameter)	026-34593-000	026-34593-000	026-34094-000
10	Coil, Outdoor Assembly	373-19800-005	373-19800-019	373-19800-020
11	Dryer, Filter	029-22157-000	029-22157-000	029-22157-000
12	Valve, Base (3/8")	025-31899-000	025-31899-000	025-31899-000
13	Valve, Base (7/8")	025-31901-000	025-31901-000	025-31901-000
14	Wireway	028-13216-000	028-13216-000	028-13216-000
15	Cover, Control Box	2218-1151/A	2218-1151/A	2218-1151/A
16	Pan, Base	2260-1011	2260-1011	2260-1011
17	Panel, Top	2260-1021/A	2260-1021/A	2260-1021/A
18	Plate, Blockoff	2260-1081/B	3948-1081/B	2660-1081/B
19	Panel, Corner	073-15606-115	035-15606-116	035-15606-117
20	Lug, Ground	1216-229	1216-229	1216-229
21	Relief, Strain	1216-235	1216-235	1216-235
22	Guard, Coil (2 Req'd)	026-34540-000	026-34541-000	026-34542-000
23				
24	Guard, Fan	026-35511-022	026-35511-022	026-35511-022
25	Mount, Compressor (Pkg. of 4) Mount, Compressor (4 req'd.)	--- 028-12355-000	9435-1081 ---	--- 028-12355-000
26	Plug, Electrical	025-33306-006	025-33306-006	025-33306-006
27*	Diagram, Wiring	035-15861-501	035-15861-501	035-15861-501
28	Blanket, Compressor	---	010-06640-000	---
29	Guard, Wire Mesh Coil	028-14730-000	028-14731-000	028-14733-000
30	Start Device, Solid State	---	024-20867-002	---
31				

NOTE: *Not ShownNew replacement parts shown in **bold** face type at the first printing of parts list dated 9/02.

Major components and suggested stocking items are shown with shaded item number.

"←" Across from row indicates a change in that row.

--- Not applicable to specified model.

Field Installed Accessories - Non-Electrical		
Part Number	Description	Used With
026-32621-000	Compressor Blanket Kit	018, 024, 036
026-34627-001	Compressor Blanket Kit	030
026-34627-002	Compressor Blanket Kit	042
Field Installed Accessories - Electrical		
Part Number	Description	Used With
2ET07700224	Thermostat, Programmable, Electronic	Cool/Heat
2ET07700324	Thermostat, Programmable, Electronic	Cool/Heat
2HU06700124	Dehumidification Control	NVS Models
2LA06700224	Low Ambient Kit	All Model
2PS06701606	Refrigerant Safety Kit	All Model
2SA06702306	Hard Start Kit	018
2SA06706206	Hard Start Kit	024
2SA06703706	Hard Start Kit	030
2SA06702006	Hard Start Kit	036
2SA06714206	Hard Start Kit	042
2SA06702406	Hard Start Kit	048
2SA06706006	Hard Start Kit	060
2TB08700124	Subbase, - 1 Cool	2TH13700424
2TB17700324	Subbase, - 1 Cool - 1 Heat	2TH13700424
2TD06700124	Thermostat, Outdoor	Provides Additional Staging
2TH07700124	Thermostat, Manual 1 Heat - 1 Cool	Cool/ Heat
2TH13700424	Thermostat, Manual	Heat Only

TO ORDER AUTHORIZED FACTORY REPLACEMENT PARTS - Contact your Source1 HVAC Parts Distributor or visit our website at www.Source1Parts.com for a Distributor and Dealer listing.