

SUBMITTAL DATA SHEET



Heating and Air Conditioning

SPLIT SYSTEM EVAPORATOR BLOWER 15 TONS - MODELS: K*EU180

| | | | | |
|-------------------|------|--------------|-----------|---------------|
| JOB NAME: | | LOCATION: | | |
| PURCHASER: | | ORDER NO.: | | |
| ENGINEER: | | | | |
| SUBMITTED TO: | FOR: | REF: | APPROVAL: | CONSTRUCTION: |
| SUBMITTED BY: | | DATE: | | |
| UNIT DESIGNATION: | | SCHEDULE NO. | | MODEL NO. |

PRODUCT DATA

Cooling Performance

Total Capacity MBH

Sensible Capacity MBH

Evaporator Pressure
at Saturation PSI

Evaporator Temperature
at Saturation °F

Total Supply Air CFM

Temp. of Air Entering
Evaporator Coil..... / °F DB/WB

Heating Performance

Refer to field-installed accessories on reverse side

Supply Air Blower Performance

Total Supply Air CFM

Total Resistance External To Unit IWG

Blower Speed..... RPM

PWR Output Req. BHP

Motor Rating HP

PWR Input Req. kW

Electrical Data

Power Supply..... AMPS

Total Unit Ampacity .. AMPS

Min. Wire Size AWG
(Copper Conductors)

Max. Fuse Size Dual Element AMPS

Unit Weight

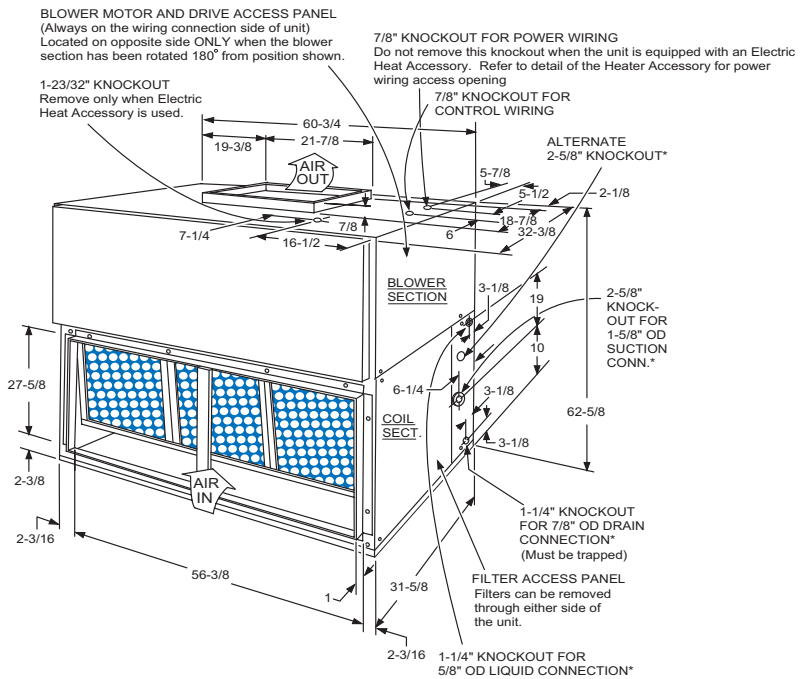
Total Operating Weight LBS
(Including field-installed accessories)

Matching Condensing Unit Data

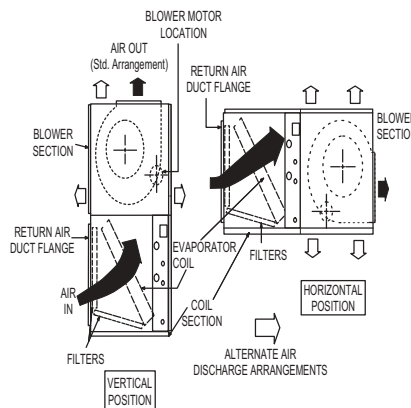
Model Number _____

Submittal Form Number _____

DIMENSIONS - INCHES



APPLICATION



NOTE: CERTAIN BLOWER POSITIONS ARE NOT RECOMMENDED, BECAUSE THE BLOWER MOTOR SHOULD NOT BE MOUNTED UPSIDE DOWN.

ACCESSORIES

- ELECTRIC HEATERS - Add 14-1/4" To Unit Height When Using 10, 16, 26 or 36 KW Heater.
- Add 21-3/4" To Unit Height When Using 72 KW Heater.
- SUPPLY AIR PLENUM - Add 27" To Unit Height When Used.
- BASE - Add 24" to Unit Height When Used.
- HOT WATER OR STEAM COIL - Add 6" To Unit Depth When Used.

MINIMUM CLEARANCES

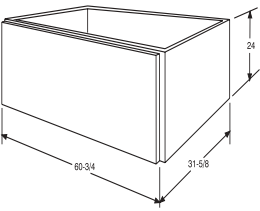
| | |
|---------------------------------------|------------------|
| Side with RETURN AIR opening | 24" ¹ |
| Side with SUPPLY AIR opening | 24" ¹ |
| Side with PIPING CONNECTION..... | 61" ² |
| Side opposite PIPING CONNECTION | 26" ³ |
| Bottom | 4 ⁴ |

¹ Overall dimension of the unit will vary if an electric heater, a supply air plenum or a base is used.

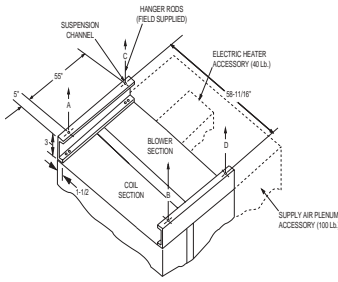
²This dimension is required for removal of the coil. Only 26" is required for normal servicing.

³If the coil has to be removed, this dimension is required to loosen screws that secure the coil to the unit frame. This dimension will also be required for blower motor access if the piping connections are made on the opposite side of the unit.

⁴Allow enough clearance to trap the condensate drain line.



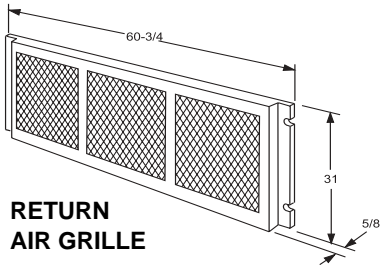
BASE



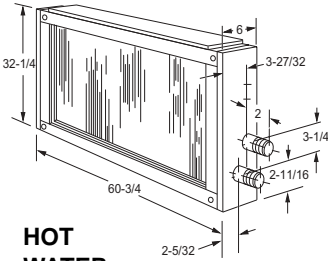
SUSPENSION ACCESSORY ARRANGEMENT/ 15 TON

BASIC UNIT SUSPENSION WEIGHTS (LBS.)

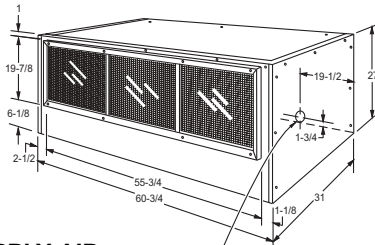
| Susp'n Point | With 2 HP Motor | With Heater Access | With Plenum Access | With Heater & Plenum Access |
|--------------|-----------------|--------------------|--------------------|-----------------------------|
| A | 95 | 95 | 85 | 85 |
| B | 120 | 120 | 100 | 100 |
| C | 95 | 115 | 165 | 185 |
| D | 115 | 140 | 185 | 205 |
| Total Wt. | 425 | 470 | 535 | 575 |



RETURN AIR GRILLE

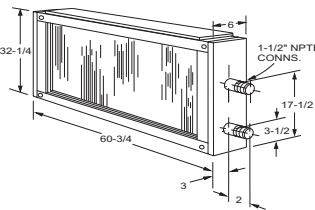


HOT WATER COIL



SUPPLY AIR PLENUM

2-1/2 KNOCKOUT FOR POWER WIRING WHEN ELECTRIC HEATER IS USED

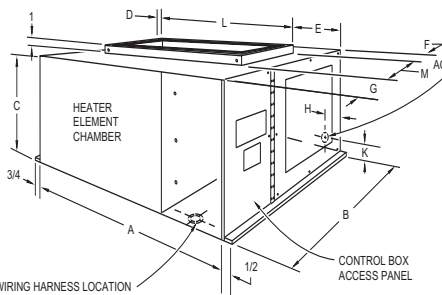


STEAM COIL

FIELD-INSTALLED ACCESSORIES

- SUPPLY AIR PLENUM (ISOP0452)
- RETURN AIR GRILLE(1RG0452).....
- BASE (1BS0452)
- (Vertical Application Only)
- SUSPENSION PACKAGE (1HH0451).....
- (Horizontal Application Only)
- ELECTRIC HEATER*
- Model Number..... _____
- Capacity (@ _____ Volts) _____ MBH
- Power Input Requirement _____ kW
- (Less Blower Motor)
- STEAM COIL (1NF0452)
- Steam Pressure _____ PSIG
- Capacity _____ MGB
- Steam Rate _____ LBS/HR
- .. Entering Air Temperature _____ °F
- HOT WATER (1HW0452)
- Capacity _____ MBH
- Entering Water Temperature.... _____ °F
- Water Flow Rate _____ GPM
- Entering Air Temperature..... _____ °F
- Water Pressure Drop..... _____ PSI

* Units with electric heat have a single source power supply. Refer to Product Data on front side for electric data



WIRING HARNESS LOCATION
This opening in the bottom of the heater control box is used for the wiring harness that connects the heater accessory to the basic unit. It is provided with a squeeze connector for securing the wiring harness, and its location corresponds to the location of the 1-23/32 inch knockout in the top panel of the basic unit.

ACCESS OPENING FOR POWER SUPPLY WIRING
10KW THRU 30KW - Add a 1-1/4 inch conduit fitting to the 1-23/32 inch hole for wire sizes up through #1 AWG. Remove the knockout ring and add a 1-1/2 inch conduit fitting to the 1-31/32 inch hole for wire sizes up through #0 AWG.
50 KW - Add a 1-1/4 inch conduit fitting to the 1-23/32 inch hole for wire sizes up through #1 AWG. Remove the knockout ring and add a two-inch conduit fitting to the 2-1/2" hole for wire sizes up through #000 AWG. Used on FEH180 only.

ELECTRIC HEATER DIMENSIONS

| Heater Model | Nom. kW | Heater Dimensions (inches) | | | | | | | | |
|-----------------|---------|----------------------------|--------|--------|-------|-------|-----|-------|-------|-------|
| | | A | B | C | D | E | F | G | H | K |
| 2HS04501025, 46 | 10 | | | | | | | | | |
| 2HS04501605, 46 | 16 | 27-1/4 | 25-1/4 | 14-1/4 | 1 | 4 | 1/2 | 5-1/2 | 1-1/2 | 1-1/2 |
| 2HS04502625, 46 | 26 | | | | | | | | | |
| 2HS04503625, 46 | 36 | | | | | | | | | |
| 2HS04507225, 46 | 72 | 29-7/8 | 26-3/8 | 21-3/4 | 2-3/8 | 5-1/4 | 3/4 | 6-3/4 | 2-1/4 | 2-1/2 |