

JOB NAME \_\_\_\_\_ LOCATION \_\_\_\_\_  
 PURCHASER \_\_\_\_\_ ORDER NO. \_\_\_\_\_  
 ENGINEER \_\_\_\_\_  
 SUBMITTED TO \_\_\_\_\_ FOR:  Reference  Approval  Construction  
 SUBMITTED BY \_\_\_\_\_ DATE \_\_\_\_\_

UNIT DESIGNATION: Schedule No. \_\_\_\_\_ MODEL NO. \_\_\_\_\_

**PRODUCT DATA**

**COOLING PERFORMANCE**

TOTAL CAPACITY \_\_\_\_\_ MBH  
 SENSIBLE CAPACITY \_\_\_\_\_ MBH  
 EVAPORATOR PRESSURE \_\_\_\_\_ PSIG  
 AT SATURATION \_\_\_\_\_ PSIG  
 EVAPORATOR TEMPERATURE \_\_\_\_\_ °F  
 AT SATURATION \_\_\_\_\_ °F  
 TOTAL SUPPLY AIR \_\_\_\_\_ CFM  
 TEMP. OF AIR ENTERING \_\_\_\_\_ °F  
 EVAPORATOR COIL \_\_\_\_\_ / \_\_\_\_\_ °F DB/WB

**HEATING PERFORMANCE**

Refer to field-installed accessories on reverse side.

**SUPPLY AIR BLOWER PERFORMANCE**

TOTAL SUPPLY AIR \_\_\_\_\_ CFM  
 TOTAL RESISTANCE EXTERNAL \_\_\_\_\_ IWG  
 TO UNIT \_\_\_\_\_ IWG  
 BLOWER SPEED \_\_\_\_\_ RPM  
 POWER OUTPUT REQUIREMENT \_\_\_\_\_ BHP  
 MOTOR RATING \_\_\_\_\_ HP  
 POWER INPUT REQUIREMENT \_\_\_\_\_ KW

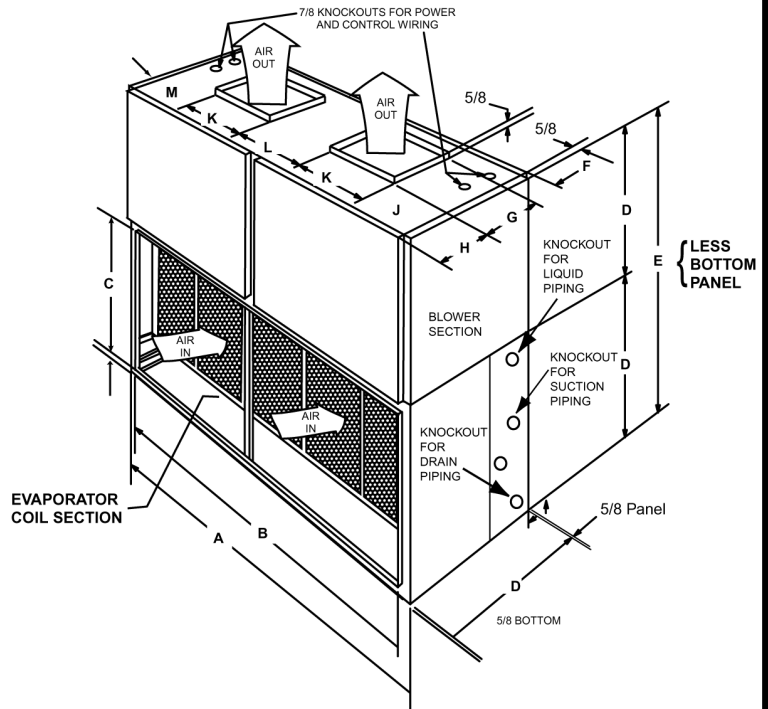
**ELECTRICAL DATA**

POWER SUPPLY \_\_\_\_\_ / \_\_\_\_\_ / \_\_\_\_\_  
 TOTAL UNIT AMPACITY \_\_\_\_\_ AMPS  
 MINIMUM WIRE SIZE \_\_\_\_\_ AWG  
 (Copper Conductors)  
 MAXIMUM FUSE SIZE \_\_\_\_\_ AMPS  
 DUAL ELEMENT \_\_\_\_\_ AMPS

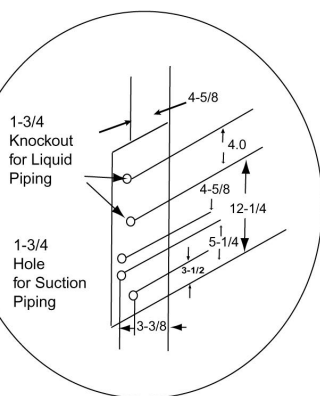
**UNIT WEIGHT**

TOTAL OPERATING WEIGHT \_\_\_\_\_ LBS.  
 (Including field-installed accessories)

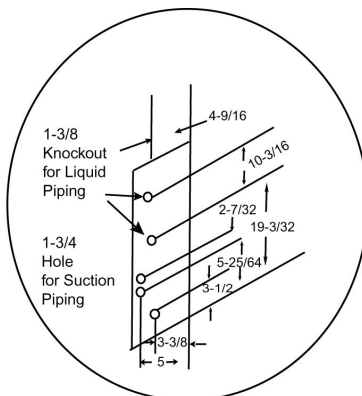
**DIMENSIONS – INCHES**



MODEL	A	B	C	D	E	F	G	H	J	K	L	M
LB180	89-1/2	85.0	26.0	29-1/2	59	1-7/16	15-7/8	12-7/16	15-13/16	16	16	20-3/4
LB240	100-1/8	95-5/8	33-1/4	36-5/8	73-1/4	2-1/2	18-7/8	16-1/2	15-13/16	21-7/8	18	22-9/16

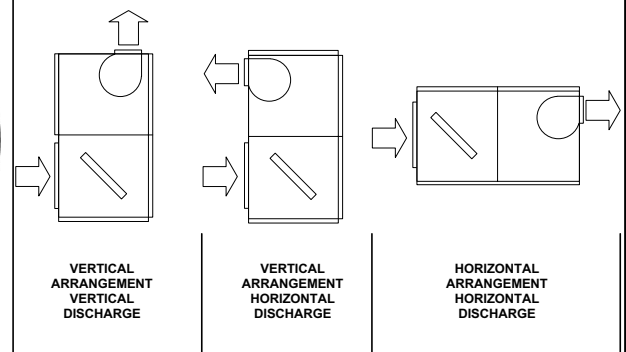


LB 180 Piping Connection Dimensions



LB 240 Piping Connection Dimensions

**INSTALLATION CONFIGURATION**



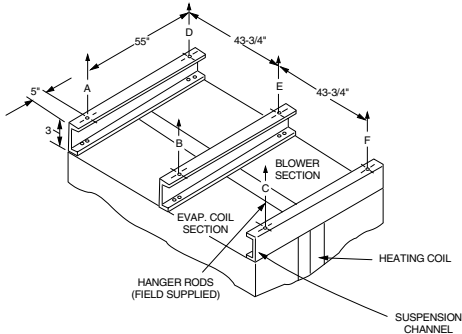
**SPLIT-SYSTEM EVAPORATOR BLOWERS**  
**15 & 20 TON**  
**MODEL LB180 & 240**

036-22148-001-B-0502

Supersedes: 036-22148-001-A-1201



## SUSPENSION MOUNTING (Horizontal Application)



Four 3/8" - 16 weld nuts are provided in the unit support angles for ceiling suspension. Knockouts are provided in panels for access to these weld nuts. Support rods must be supplied in the field.

SUSPENSION POINT	W/ 3HP MOTOR*
A	142
B	132
C	152
D	162
E	132
F	127
<b>Total Weight</b>	<b>847</b>

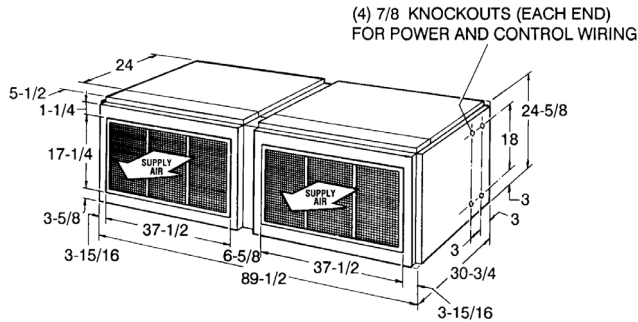
\*Motor location at suspension point "F".

## FIELD-INSTALLED ACCESSORIES

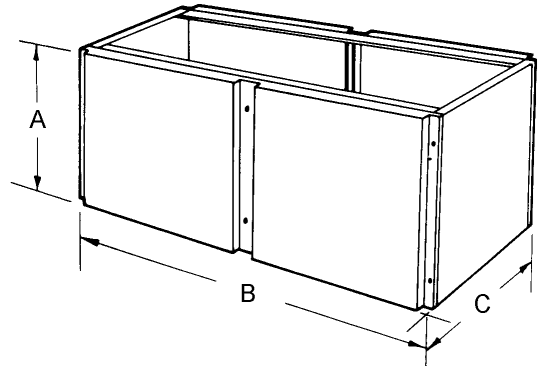
- SUPPLY AIR PLENUM (1SP0405) .....
- RETURN AIR GRILLE (1RG0405) .....
- BASE (1BS0405 or 1BS0406) .....
- (Vertical Application Only)
- ELECTRIC HEATER\* .....
- Model Number \_\_\_\_\_
- Capacity (@ \_\_\_\_\_ Volts) ..... \_\_\_\_\_ MBH
- Power Input Requirement ..... \_\_\_\_\_ KW
- (Less Blower Motor)

## ACCESSORY DIMENSIONS – INCHES

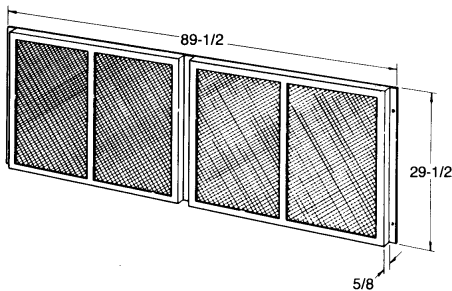
MODEL	A	B	C
1BS0405	23 3/8	89 1/2	30 3/4
1BS0406	23 3/8	100 1/8	37 7/8



**SUPPLY AIR PLENUM**  
(LB180 only)

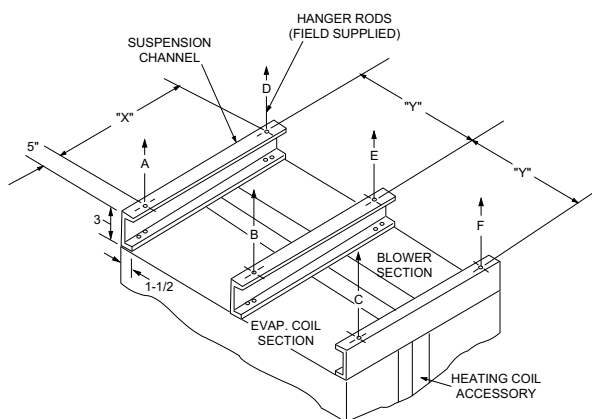


**BASE ACCESSORY**



**RETURN AIR GRILLE**  
(LB180 only)

### SUSPENSION MOUNTING (Horizontal Application)



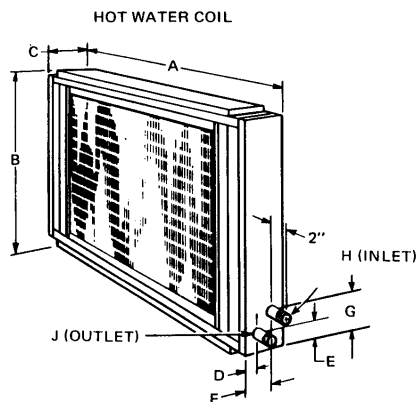
ACCESSORY	UNIT (Tons)	DIM. (In.)	
		X	Y
1HH0403	20, 25, 30	69-1/4	49-1/6

SUSPENSION POINT	20 TON UNIT
A	200
B	175
C	200
D	175
E	175
F	200
<b>Total Weight</b>	<b>1125</b>

### FIELD-INSTALLED ACCESSORIES

HOT WATER COIL (1HW0405, 1HW0406) .....  MBH  
 Capacity ..... °F  
 Entering Water Temperature ..... °F  
 Water Flow Rate ..... GPM  
 Entering Air Temperature ..... °F  
 Water Pressure Drop ..... PSI  
 -

### ACCESSORY DIMENSIONS – INCHES



### HOT WATER COILS

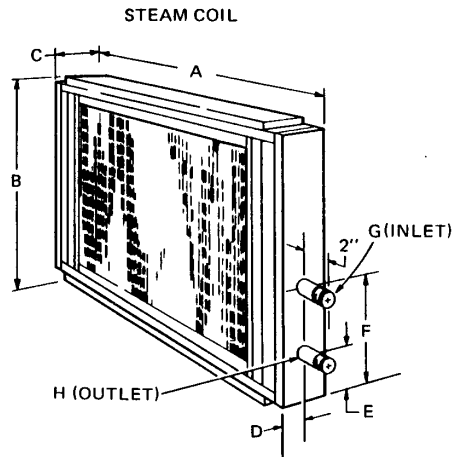
Coil Model	Water Coil Dimensions								
	A	B	C	D	E	F	G	H <sup>3</sup>	J <sup>3</sup>
1HW0450 <sup>1</sup>	36	21-7/8	5	1-11/16	2-3/4	3-3/8	6-1/4	1 NPTE	1 NPTE
1HW0451 <sup>1</sup>	52	25	5	1-11/16	2-3/8	3-3/8	5-7/8	1 NPTE	1 NPTE
1HW0452 <sup>2</sup>	60-3/4	32-1/4	6	2-1/8	3-5/16	3-13/16	6-9/16	1-3/8 O. D.	1-3/8 O. D.
1HW0405 <sup>2</sup>	89-1/2	30-3/4	6	2-1/8	3-3/8	3-13/16	6-11/16	1-3/8 O. D.	1-3/8 O. D.
1HW0406 <sup>2</sup>	100-1/8	37-7/8	6	2-1/8	3-3/8	3-13/16	6-11/16	1-3/8 O. D.	1-3/8 O. D.
1HW0407 <sup>2</sup>	103-1/8	45-1/4	6	2	3-3/8	3-15/16	6-7/16	1-5/8 O. D.	1-5/8 O. D.

<sup>1</sup> Installs over the return air opening of the unit in front of the filters on 5, 7-1/2 and 10 ton units. Refer to the respective unit installation instruction for Duct Flange Dimensions.

<sup>2</sup> Installs between the evaporator section and the blower section on 15 through 50 ton units.

<sup>3</sup> All NPTE connections are brass. All O.D. connections are copper.

## SUSPENSION MOUNTING (Horizontal Application)



### STEAM COILS

Coil Model	Steam Coil Dimensions							
	A	B	C	D	E	F	G <sup>3</sup>	H <sup>3</sup>
1NF0450 <sup>1</sup>	36	21-7/8	5	2-1/2	2-5/8	10-5/8	1-1/2 NPTE	1-1/2 NPTE
1NF0451 <sup>1</sup>	52	25	5	2-1/2	2-5/8	13-5/8	1-1/2 NPTE	1-1/2 NPTE
1NF0452 <sup>2</sup>	60-3/4	32-1/4	6	3-5/16	4-1/8	18-1/8	1-1/2 NPTE	1-1/2 NPTE
1NF0453 <sup>2</sup>	89-1/2	30-3/4	6	3-7/16	3-15/16	14-15/16	1-1/2 NPTE	1-1/2 NPTE
1NF0454 <sup>2</sup>	100-1/8	37-7/8	6	3-7/16	4-5/16	18-5/16	2 NPTE	1-1/2 NPTE
1NF0407 <sup>2</sup>	103-1/8	45-1/4	6	2	3-1/16	21-5/8	2 NPTE	1 NPTE

<sup>1</sup> Installs over the return air opening of the unit in front of the filters on 5, 7-1/2 and 10 ton units. Refer to the respective unit installation instruction for Duct Flange Dimensions.

<sup>2</sup> Installs between the evaporator section and the blower section on 15 through 50 ton units.

#### NOTES:

---



---



---



---



---

Subject to change without notice. Printed in U.S.A.

Copyright © 2002 by Unitary Products Group. ALL RIGHTS RESERVED

Supersedes: 036-22148-001-A-1201

036-22148-001-B-0502