

SUBMITTAL DATA SHEET



Heating and Air Conditioning

SPLIT-SYSTEM CONDENSING UNITS 15 & 20 TONS MODELS: HB180 & HB240

JOB NAME:			LOCATION:		
PURCHASER:			ORDER NO.:		
ENGINEER:					
SUBMITTED TO:	FOR:	REF:	APPROVAL:	CONSTRUCTION:	
SUBMITTED BY:			DATE:		
UNIT DESIGNATION:			SCHEDULE NO.	MODEL NO.	

PRODUCT DATA

Cooling Performance

Total Capacity MBH
 Outdoor Design Temp. °F
 Suction Pressure at Saturation PSIG
 Suction Temperature at Saturation °F

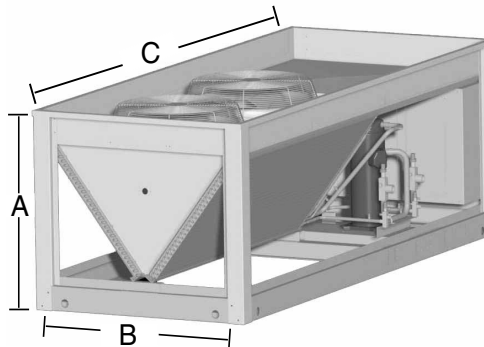
Electrical Data

Power Supply / /
 Total Unit Ampacity AMPS
 Power Input Requirement kW
 Maximum Fuse Size
 Dual Element AMPS

Unit Weight

Total Operating Weight LBS
 (Including field-installed accessories)

DIMENSIONS - INCHES



All dimensions are in inches. They are subject to change without notice. Certified dimensions will be provided upon request.

OUTDOOR UNIT DIMENSIONS

Unit	Dimensions (In.)		
	A	B	C
15 Ton	37.5	45.75	110.5
20 Ton	37.5	45.75	128.1

HB MINIMUM CLEARANCES

Location	Dimension (In.)
Overhead (Top)	120"
Front Access Panels	36"
Left Side	30"
Right Side	30"
Rear	24"
Bottom	0"

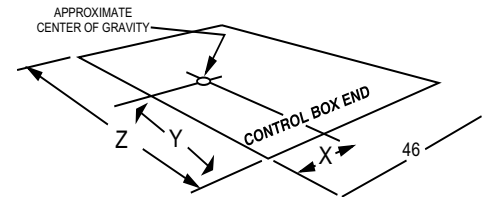
- Units must be installed outdoors. Overhanging structures or shrubs should not obstruct condenser air discharge.
- Adequate snow clearance must be provided if winter operation is expected.

HB180 & 240 CONNECTION SIZES

Connection Entry	Connection Size	
	15 Ton	20 Ton
Suction Line	1-1/8 ID	1-3/8 ID
Liquid Line	5/8 ID	5/8 ID
Power Wiring	2-1/8 KO	2-1/8 KO
Control Wiring	7/8 KO	7/8 KO

CENTER OF GRAVITY

Unit	Dimensions (in.)		
	X	Y	Z
15 Ton	23	47	110
20 Ton	23	52	128



FEATURES:

- ETL Listed to US and Canadian Standards
- Dual Hermetic Scroll Compressors
- Propeller-Type Condenser Fans
- Inherently Protected Fan Motors with Ball Bearing and Low Ambient to 45 °F
- High, Low Pressure Controls and Anti-Cycle Protection
- Refrigerant-22 Holding Charge
- 24 Volt Temperature Control Circuit
- Crankcase Heaters
- Exterior Service Port Connections
- Backseating Suction and Liquid Line Service Valves
- Filter-Drier Supplied for Field Installation
- One-Year Limited Parts Warranty with a Five-Year Warranty on the Compressor

FIELD-INSTALLED ACCESSORIES

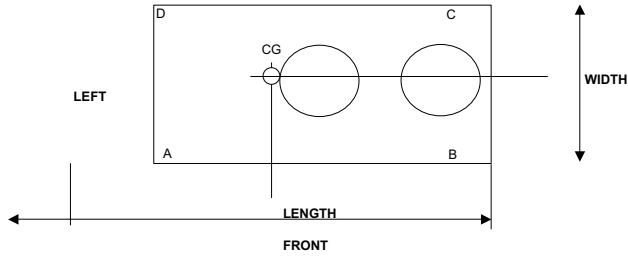
- Hot Gas Bypass
 Pump Out Accessory
 Phase Monitor Accessory
 0° Low Ambient Control
 Phenolic Coating on Condenser Coil

MATCHING AIR SIDE EQUIPMENT

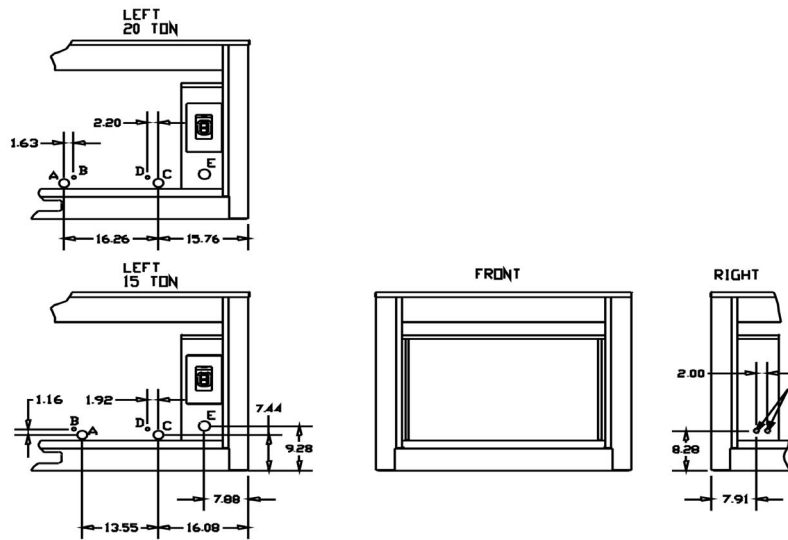
Model No. (.....)
 Submittal Form (.....)

CORNER WEIGHTS

UNIT SIZE	SHIPPING WEIGHT	OPERATING WEIGHT	A	B	C	D
15 Ton Outdoor	944	959	205	275	275	205
20 ton Outdoor	1124	1141	232	339	339	232



PIPING AND ELECTRICAL CONNECTION LOCATIONS



PIPING & ELECTRICAL CONNECTION LOCATIONS

CONNECTION ENTRY	
A	SUCTION LINE SYS #1
B	LIQUID LINE SYS. #1
C	SUCTION LINE SYS. #2
D	LIQUID LINE SYS. #2
E	POWER WIRING
F	CONTROL WIRING

NOTES:

Subject to change without notice. Printed in U.S.A.
 Copyright © by Unitary Products Group 2002. All rights reserved.

036-22151-001-A-0102
 Supersedes: Nothing