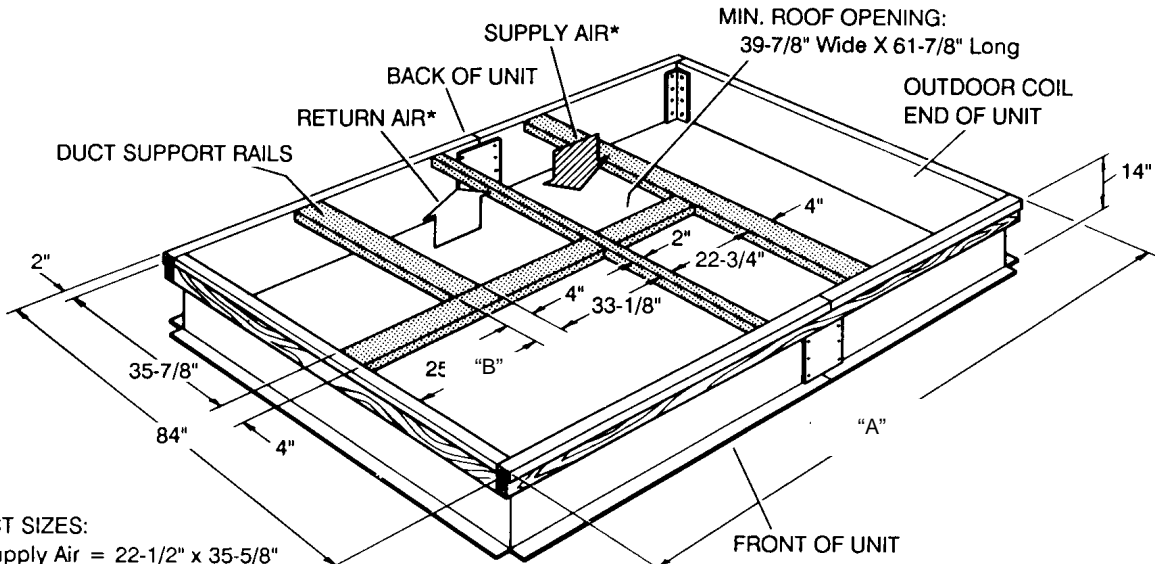


JOB NAME _____ LOCATION _____
PURCHASER _____ ORDER NO. _____
ENGINEER _____
SUBMITTED TO _____ FOR: Reference Approval Construction
SUBMITTED BY _____ DATE _____

UNIT DESIGNATION: Schedule No. _____ MODEL NO. _____

* Supply and Return Air (Including duct support rails) as shown, are typical for bottom duct applications.

For location of horizontal duct applications (On back of unit), refer to Unit Dimension details.



DUCT SIZES:
Supply Air = 22-1/2" x 35-5/8"
Return Air = 32-7/8" x 35-5/8"

ROOF CURB MODEL NUMBER	DIMENSION "A"	DIMENSION "B"
1RC0437	126 1/4"	25 1/4"

SUGGESTED ROOF OPENING		
MODEL	LENGTH	WIDTH
1RC0437	87"	80"

NOTE:

1. Roof curb is built to NRCA standards.
2. Roof curb is constructed of 18 gauge G90 steel.
3. Unit duct supports are provided.
4. Full perimeter 4 wood nailer.
5. Curbs are shipped unassembled.
6. Corner hinge pins are used for assembly.

Refer to price pages for other details.

Subject to change without notice. Printed in the U. S. A.

**ROOF CURB
MODEL: 1RC0437**

For Units: BCH 240 BQ 240 BP 240 DEE 240
DEG 240 DH 240 DCE 240-300 DCG 240-300
DJ 180-300 DM 240-300 DR 180-300

036-22210-002-B-0103

Supersedes: 036-22210-002-A-1102

