

JOB NAME _____ LOCATION _____
PURCHASER _____ ORDER NO. _____
ENGINEER _____
SUBMITTED TO _____ FOR: Reference Approval Construction
SUBMITTED BY _____ DATE _____

UNIT DESIGNATION: Schedule No. _____ MODEL NO. _____

PRODUCT DATA

COOLING PERFORMANCE

TOTAL CAPACITY MBH
SENSIBLE CAPACITY MBH
OUTDOOR DESIGN TEMP. °F

HEATING PERFORMANCE

TOTAL CAPACITY MBH
OUTDOOR DESIGN TEMP. °F

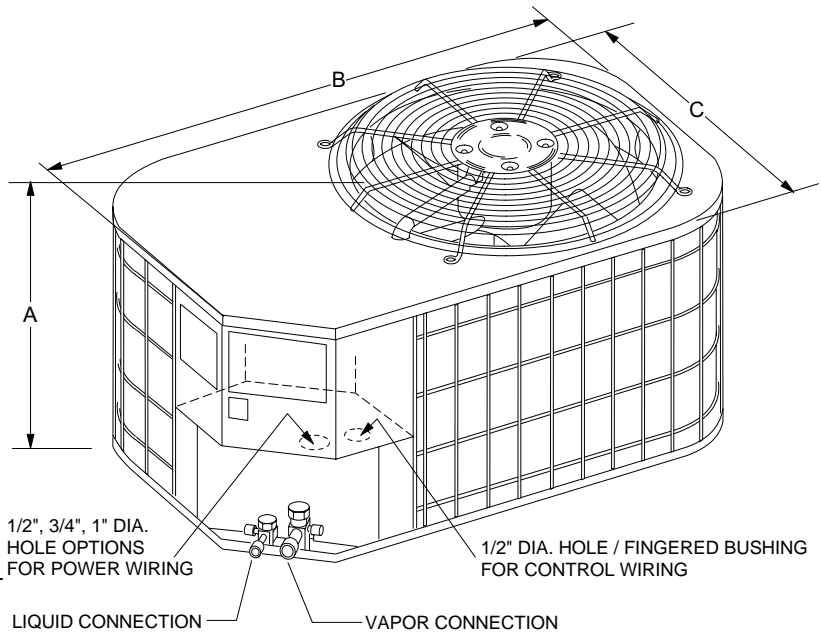
ELECTRICAL DATA

POWER SUPPLY / /
TOTAL UNIT AMPACITY AMPS
POWER INPUT REQ. KW
MINIMUM WIRE SIZE AWG
MAXIMUM OVERCURRENT DEVICE
 FUSES CIRCUIT BREAKER AMPS

UNIT WEIGHT

TOTAL UNIT WEIGHT LBS.

DIMENSIONS - INCHES



FEATURES:

- UL approval (units & accessories).
- CUL listed.
- Certified in accordance with the Unitary Small Equipment certification program, which is based on ARI Standard 210/240.
- 1-year limited parts warranty.
- 10-year limited warranty on the compressor.
- Copper tube / coated black aluminum fins.
- Time - temperature defrost control.
- Condenser fan molex plug.
- Internally protected compressor.
- Suction line accumulator.
- Top discharge propeller type fan.
- PVC wire coated fan guard and 2" x 4" coil guard.
- Pre-painted steel cabinet.
- Standard solid core discharge line filter-drier.
- R-22 total system charge (thru 15 ft. of lines).
- Sweat connections with re-useable service valves.

UNIT MODEL ERC	DIMENSIONS			REFRIGERANT CONNECTION LINE SIZE	
	A ¹	B	C	LIQUID	VAPOR
018	25	35	23	3/8	3/4
024	27	37	27		
030	27	37	27		
036	33	37	27		7/8
042	33	37	27		
048	39	37	27	1 1/8	
060	39	37	27		

¹ Includes fan guard

FIELD INSTALLED ACCESSORIES:

- Stub Adapters (# _____)
- Precharged Line Sets (# _____)
- Thermostat (# _____)
- Blower Off Delay (2FD06700224)
- Thermal Expansion Valve Kit (# _____)
- Add-on Control (2AC02700701)
- Outdoor Thermostat (2TD06700124)
- Low Temperature Cutout (2LT06700224)

CLEARANCES

Service Access 18 inch
All Other Sides 10 inch
Above Unit 60 inch
Below Unit 0 inch

MATCHING AIR SIDE EQUIPMENT:

Model No. (_____)
Submittal Form No. (_____)

NOTES:

Refer to form 515.18-TG1 for detailed specifications on the unit and its accessories. Subject to change without notice. Printed in the U. S. A.

SPLIT SYSTEM, HEAT PUMP UNITS
MODELS E1RC018 thru E1RC060
1.5, 2, 2.5, 3, 3.5, 4 and 5 TON

FORM 515.18-SD1Y (600)

Supersedes: 515.18-SD1Y (396)

