

INSTALLATION INSTRUCTION

SUSPENSION MOUNTING ACCESSORY MODEL 1HH0451

Supersedes: 550.13-N7.1 (682)

550.13-N7.1V (199)

035-16622

GENERAL

The following instruction provides the necessary information to properly install this suspension accessory (1HH0451) on a 15 or 20 ton evaporator blower.

This accessory may be used to suspend units for horizontal applications or as a base to raise vertical units 3" off the condensate drainage.

INSTALLATION

Prepare unit for horizontal suspension per the following procedure. Refer to Figures 1 and 2.

1. Remove and discard the 1/4" screws that hold the unit top panels in place.
2. Remove and discard the 1/4" retainer nuts from the unit frame to permit installation of 5/16" bolts provided in the accessory.
3. Place suspension channels on the unit and secure with the bolts, spacers, nuts and washers provided. See Figure 3.

The suspension channels require no cutting or drilling. The bottom flange of each channel has enough holes to provide four bolted connections to the coil section and to the blower section at existing hole locations in the unit top panels and in the channel flange.

Each channel is provided with holes in its top flange for suspension rods or supports to suspend the unit. When vibration eliminators are required on a suspended unit, preengineered spring suspension rods (available locally), can be used.

NOTE: The bottom flange of the suspension channels contains double sets of holes so that a 20 ton unit, with or without a heating coil accessory, may be suspended. Excess length of channel ends may be trimmed off, if desired, when units are to be suspended without a heating coil accessory.

When floor-mounting a unit for a vertical application, suspension channels may be cut in half and used under the coil section to raise unit 3 inches above the floor.

BASIC UNIT SUSPENSION WEIGHTS (Lbs.)

SUSP'N. POINT	W/2 HP MOTOR	W/HEATER ACCESS	W/PLENUM ACCESS	W/HEATER & PLENUM ACCESS
A	95	95	85	85
B	120	120	100	100
C	95	115	165	185
D	115	140	185	205
Total Wt.	425	470	535	575

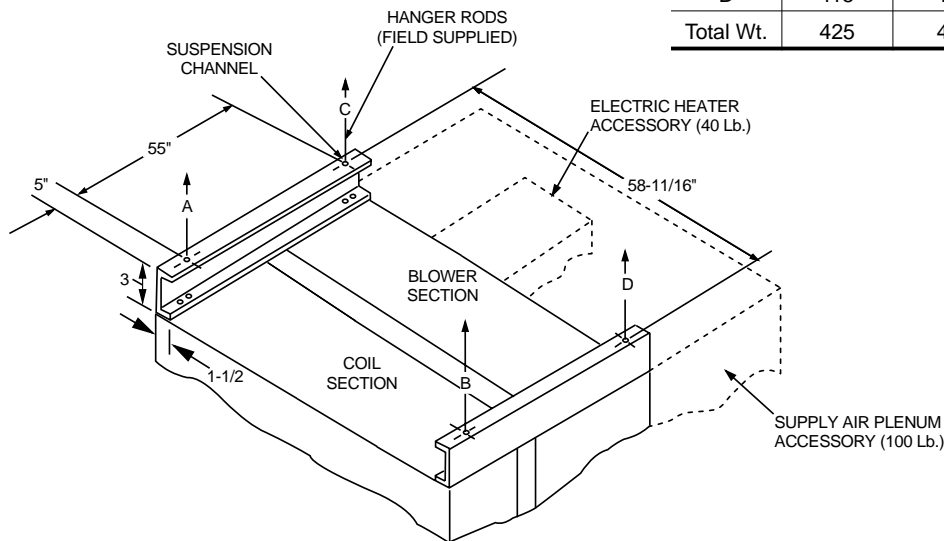
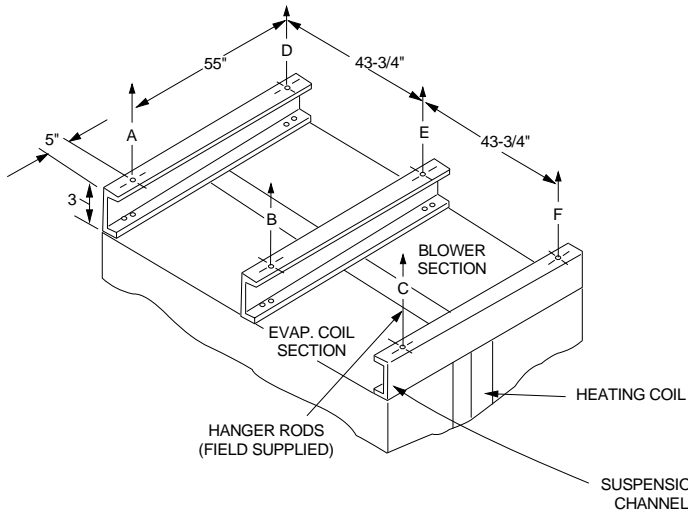


FIG. 1 - SUSPENSION ACCESSORY ARRANGEMENT (15 TON UNIT)



BASIC UNIT SUSPENSION WEIGHTS (Lbs.)

SUSPENSION POINT	W/ 3HP MOTOR*
A	142
B	132
C	152
D	162
E	132
F	127
Total Weight	847

*Motor location at suspension point "F".

FIG. 2 - SUSPENSION ACCESSORY ARRANGEMENT (20 Ton Unit)

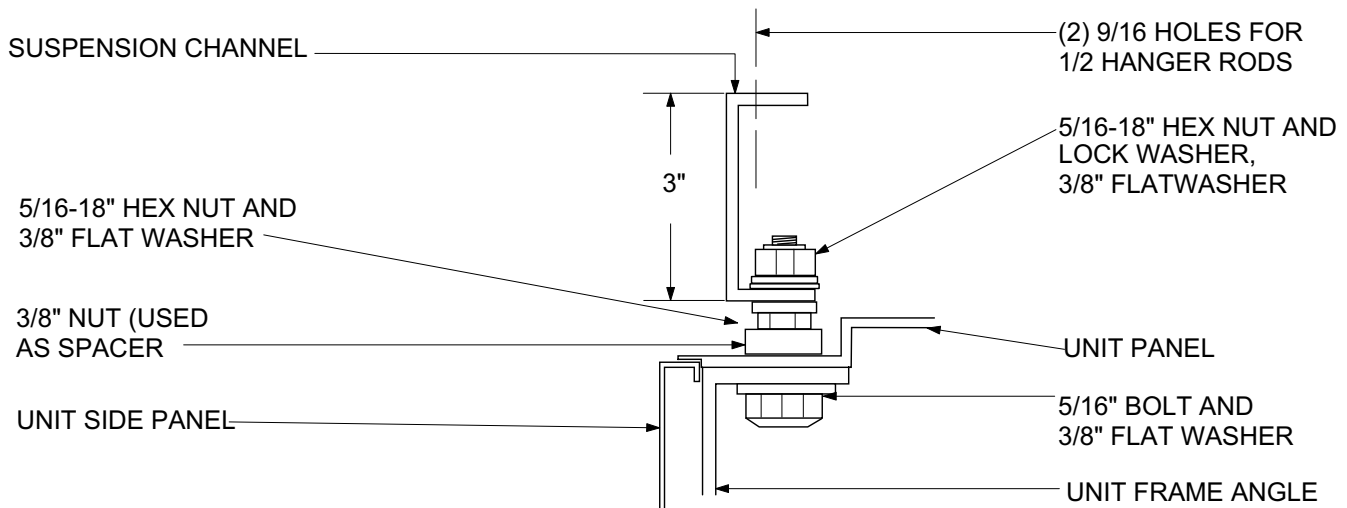


FIG. 3 - TYPICAL SUSPENSION CHANNEL MOUNTING

SUSPENSION ACCESSORY (1HH0451) PARTS LIST

QUANTITY	DESCRIPTION	PART NUMBER
6	CHANNEL, 1-1/2" X 3" X 65" Lg.	063-21276
30	BOLT, HEX. 5/16" - 18 X 1 - 1/2" Lg.	021-02783
90	WASHER, FLAT 3/8"	021-09983
30	LOCKWASHER, SPRING 5/16"	021-08697
30	NUT, HEX. 3/8" - 16 UNC-2B	021-00467
60	NUT, HEX. 5/16" - 18 UNC-2B	021-02523
1	INSTRUCTION (550.13-N7.1V)	035-16622

NOTE: Materials provided in this accessory will suspend three (3) 15 ton units or two (2) 20 ton units.

Supersedes: 550.13-N7.1(682)

Subject to change without notice. Printed in U.S.A.

Copyright © by Unitary Products Group 1999. All rights reserved.

Code: SBY

550.13-N7.1V

**Unitary
Products
Group**

5005
York
Drive

Norman
Oklahoma
73069