

JOB NAME _____ LOCATION _____
 PURCHASER _____ ORDER NO. _____
 ENGINEER _____
 SUBMITTED TO _____ FOR: Reference Approval Construction
 SUBMITTED BY _____ DATE _____

UNIT DESIGNATION: Schedule No. _____ MODEL NO. _____

PRODUCT DATA

COOLING PERFORMANCE

TOTAL CAPACITY MBH
 SENSIBLE CAPACITY MBH
 EVAPORATOR PRESSURE
 AT SATURATION PSI
 EVAPORATOR TEMPERATURE
 AT SATURATION °F
 TOTAL SUPPLY AIR CFM
 TEMP. OF AIR ENTERING
 EVAPORATOR COIL / °F DB/WB

HEATING PERFORMANCE

Refer to field-installed accessories on reverse side.

SUPPLY AIR BLOWER PERFORMANCE

TOTAL SUPPLY AIR CFM
 TOTAL RESISTANCE EXTERNAL
 TO UNIT IWG
 BLOWER SPEED RPM
 POWER OUTPUT REQUIREMENT BHP
 MOTOR RATING HP
 POWER INPUT REQUIREMENT KW

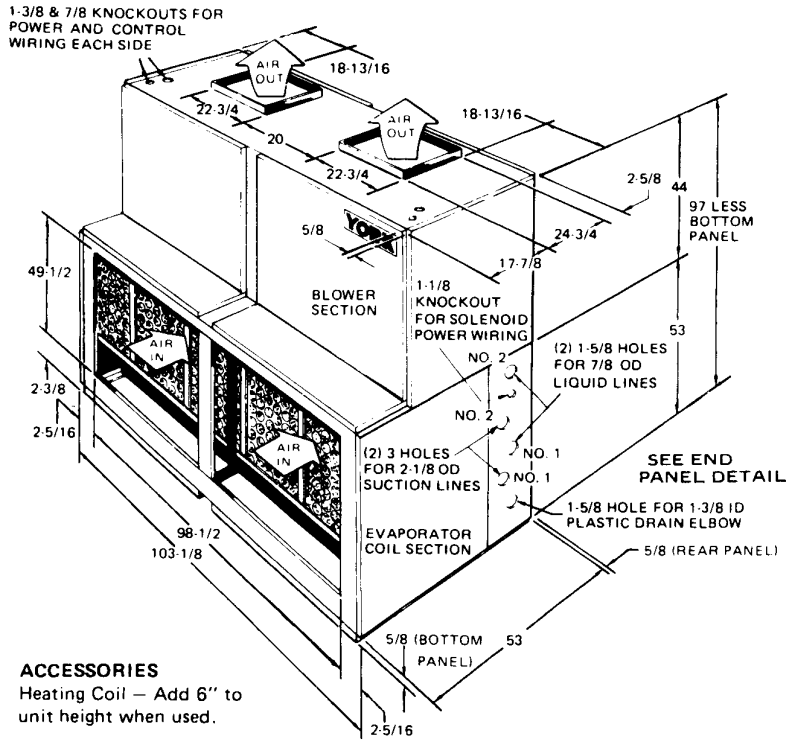
ELECTRICAL DATA

POWER SUPPLY / /
 TOTAL UNIT AMPACITY AMPS
 MINIMUM WIRE SIZE AWG
 (Copper Conductors)
 MAXIMUM FUSE SIZE
 DUAL ELEMENT AMPS

UNIT WEIGHT

TOTAL OPERATING WEIGHT LBS.
 (Including field-installed accessories)

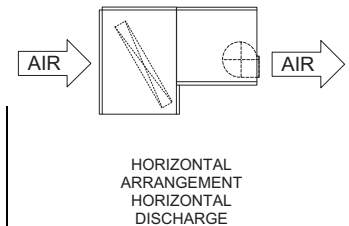
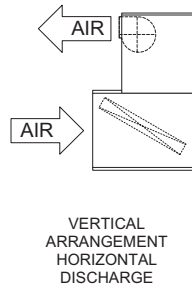
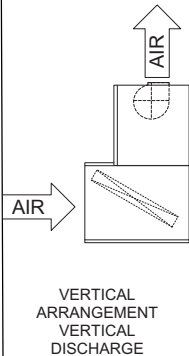
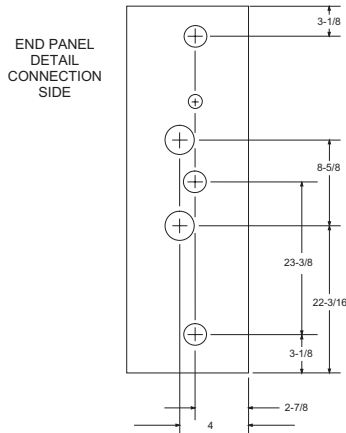
DIMENSIONS – INCHES



ACCESSORIES
 Heating Coil – Add 6" to unit height when used.

CLEARANCES
 24" on one side for piping connections and access to blower motor.
 1" on opposite side.
 1" on rear.

INSTALLATION CONFIGURATION



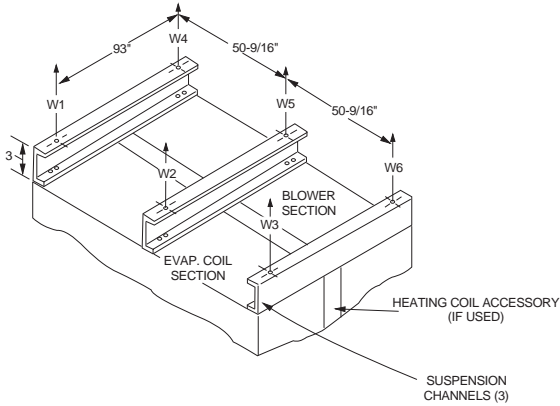
SPLIT-SYSTEM EVAPORATOR BLOWER
50 TONS
 MODEL L_EU600/M_CX600

FORM 550.13-SD10Y (399)

Supersedes: 550.13-SD10Y (882)



SUSPENSION MOUNTING (Horizontal Application)

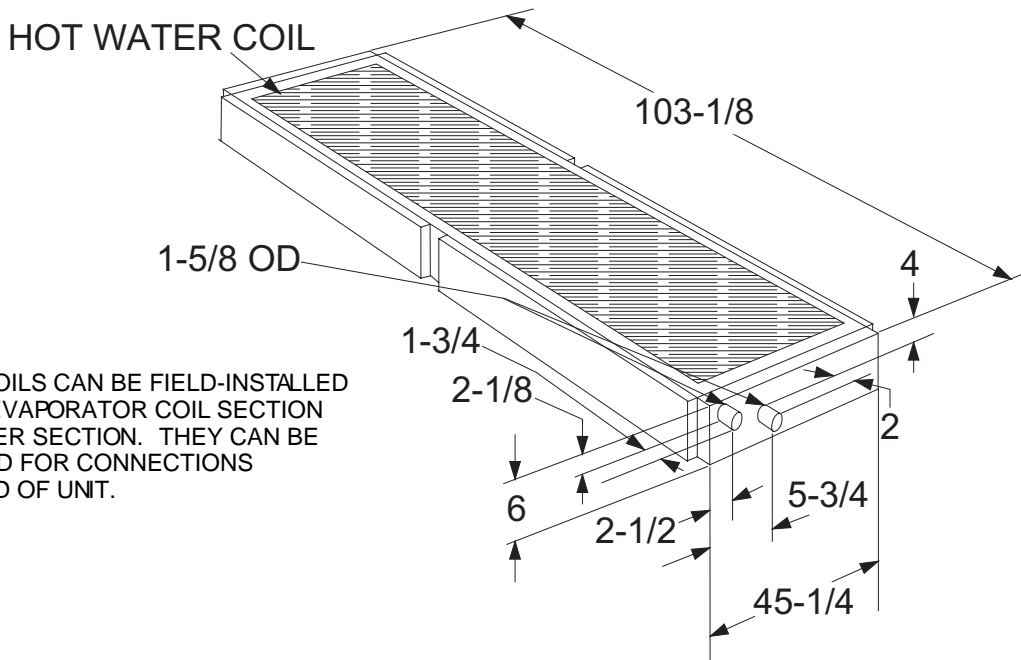


SUSPENSION WEIGHTS, LBS.					
W1	W2	W3	W4	W5	W6

FIELD-INSTALLED ACCESSORIES

- HOT WATER COIL (1HW0407)
- Capacity MBH
- Entering Water Temperature °F
- Water Flow Rate GPM
- Entering Air Temperature °F
- Water Pressure Drop PSI
-
-

ACCESSORY DIMENSIONS – INCHES



HEATING COILS CAN BE FIELD-INSTALLED BETWEEN EVAPORATOR COIL SECTION AND BLOWER SECTION. THEY CAN BE POSITIONED FOR CONNECTIONS EITHER END OF UNIT.

NOTES:
